

Q

"What Settings should I use to EXPORT my anm clip from TVP10 if using a PC (Windows ?."

ANSWER:

TVPaint 10 Export Settings For PC -

EXPORT SETTINGS FOR TVPAINT 10 -

*Please note, something else to keep in mind is that the Export settings shown in the **Video Tutorials** in the **MEDIA** section for Module 1 show the **older TVPaint 9 interface**. The instructor shows how to export the movie from TVPaint using the MPEG4 compression codec . MPEG4 is fine to use , but nowadays we actually recommend using H.264 compression codec for exporting to a Quicktime .mov file .*

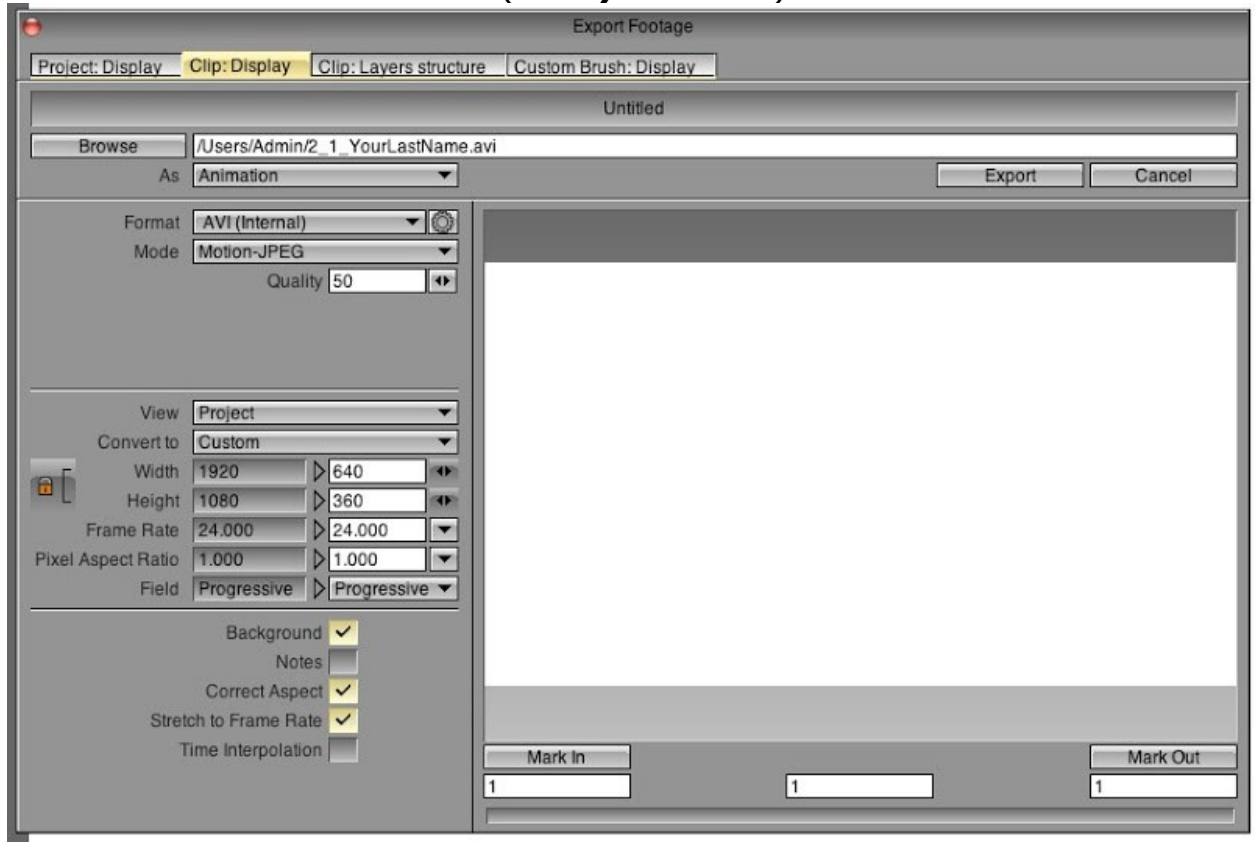
Windows users who are using TVPaint 10 will need to use the Internal .AVI export engine because Apple no longer supports Quicktime on Windows 7 and 8 64 bit apps. If you have Windows XP 32bit and you have the appropriate video compression codecs installed (such as MPEG4 and H.264) then you may still use the Quicktime export . But as a rule Windows users should use the Internal .AVI export engine in TVPaint 10. (and actually, Mac users may also use the Internal .AVI export , in addition to Quicktime export . Either .mov or .avi files should play fine in Quicktime Pro) .

Export Settings for WINDOWS PC -

- File Menu -- Export --
- Export As = Animation
- Format = AVI (internal),
- Mode = *Motion-JPEG*
- Compression Quality = 50% - to - 70%

(50% compression will work fine for most things . If you need to increase the resolution you may bump up the compression quality to 60% or 70% , 80% ... whatever looks good. Increasing the compression quality will increase the file size.)

- Frames Per Second = 24 FPS (***always 24 FPS***)



- Note that the original project size was 16:9 aspect ratio 1920 x 1080, but for exporting I've downscaled the size to 640 x 360 .
- Frame Rate = 24
- Pixel Aspect Ratio = 1.000
- Field = Progressive
- Background - CHECK ✓
- Notes - unchecked
- Correct Aspect - CHECK ✓
- Stretch to frame rate - CHECK ✓
- Time Interpolation - unchecked
- Export Sound Track - Check ✓ (IF there is sound , otherwise leave this Unchecked) .

After all these settings are correct and you have NAMED your movie and selected a destination folder , click on **EXPORT**.

Using these settings creates a .AVI movie . In most cases Quicktime Player can open and play these .AVI movies exported from TVPaint , but if you need to you may use [Quicktime PRO 7](#) to re-export as a .MOV with H.264 compression.

[*NOTE: Mac users may also use these settings for exporting to .AVI, though generally on Mac exporting to Quicktime .MOV with H.264 compression is preferred.]

**** Always use H.264 compression at 24 FPS, but do *NOT* use the default "Animation" compression codec, set at at 30 FPS , because that is a lossless codec which will make your .mov file size HUGE .**

- **H.264 compression** codec set to "High" quality , at 24 FPS is what you should use. **

Naming convention should be

01_SmithJohn_v1.mov

that means: this is the first project , by student last nameFirst name and this is his first version.

Also we go go with

01_SmithJ_foundObj_v1.mov

This tells me this is the first project by student Last name First Initial_some descriptive info and the v1 means it's his first version of this project.

-David Nethery
and Kathleen Quaife